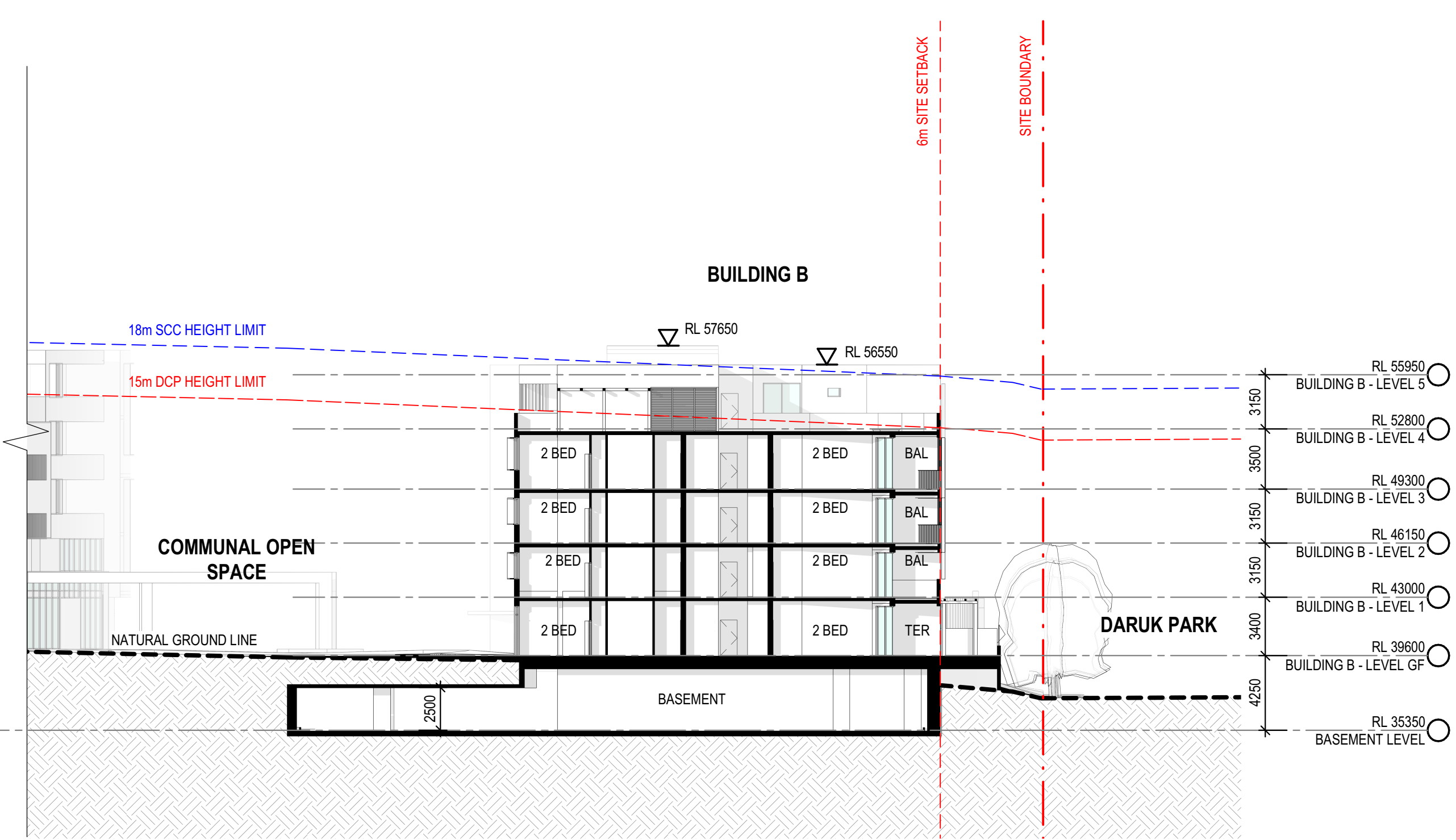
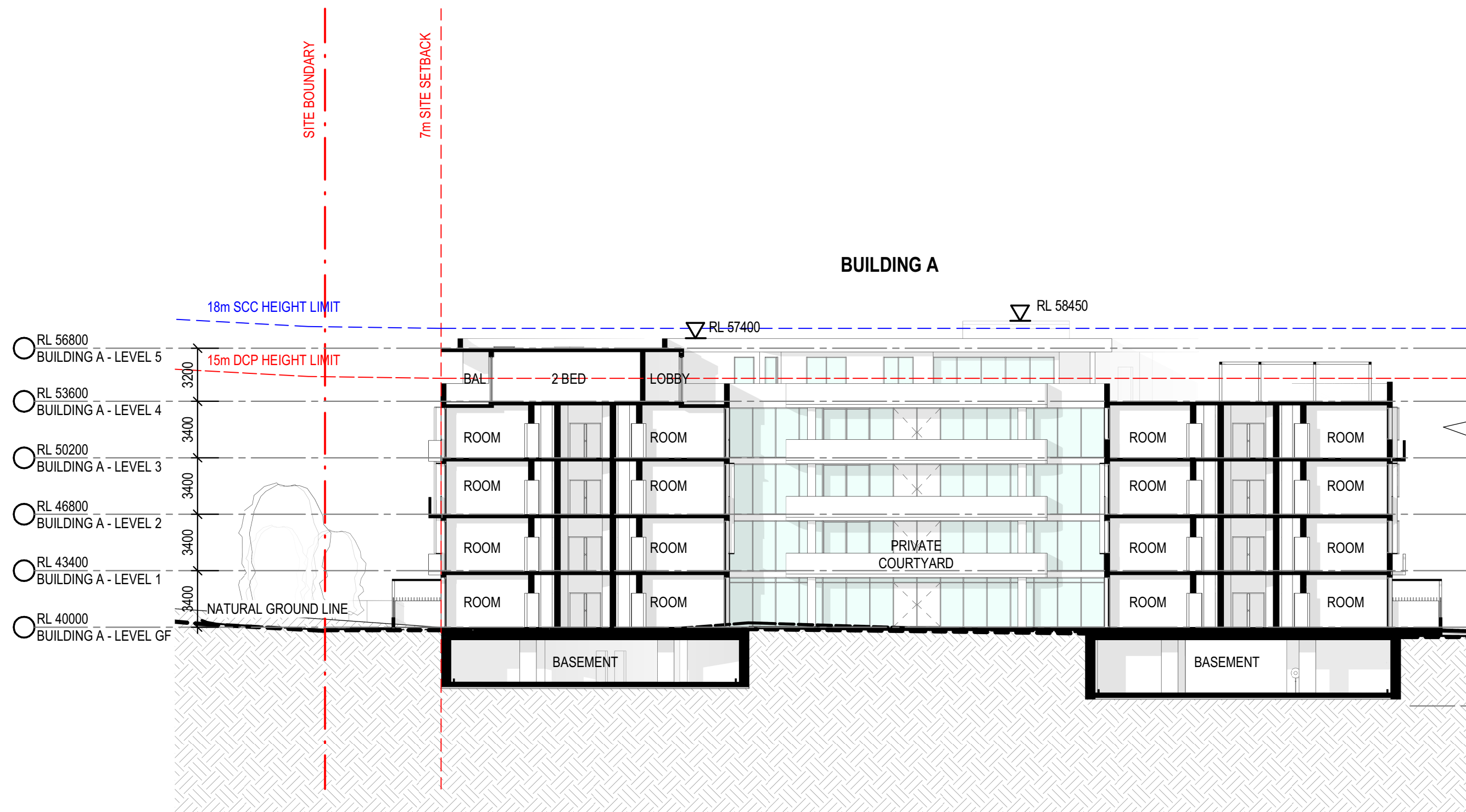
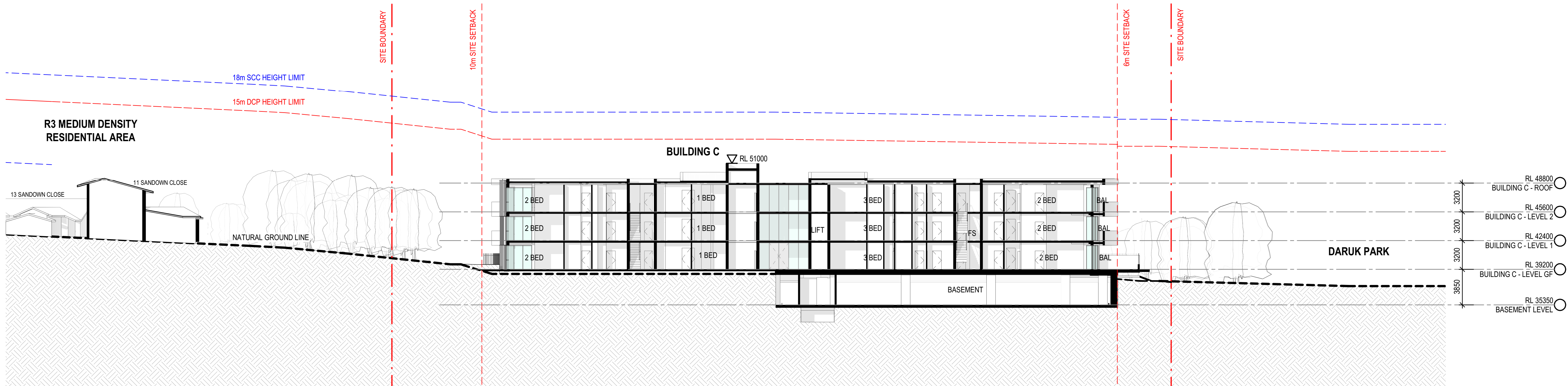


AMENDMENTS

ISSUE	DESCRIPTION	APPROVED	DATE
A	FOR DEVELOPMENT APPLICATION	RP	15/11/19
B	FOR DEVELOPMENT APPLICATION	RP	07/01/21

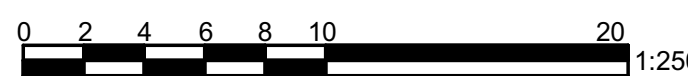
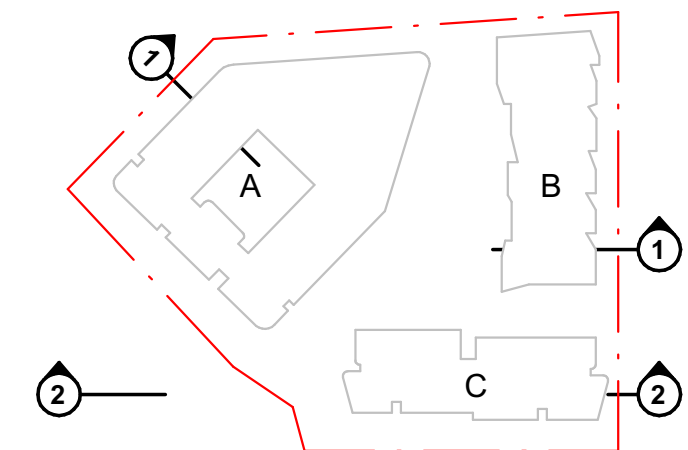


1 SITE SECTION - 01  
SCALE 1 : 250



2 SITE SECTION - 02  
SCALE 1 : 250

KEY PLAN



THIS DRAWING ISSUE HAS BEEN REVIEWED FOR  
**DEVELOPMENT APPLICATION**

APPROVED BY: GA CHECKED BY: RP

CLIENT  
SUMMIT CARE



DRAWING  
SITE SECTIONS - 01

SHEET CREATED 06/02/16 SCALE @ A1 1 : 250 DRAWN BN

PROJECT No. 2016098 DRAWING No. DA-300 ISSUE B

PROJECT  
CASULA AGED CARE

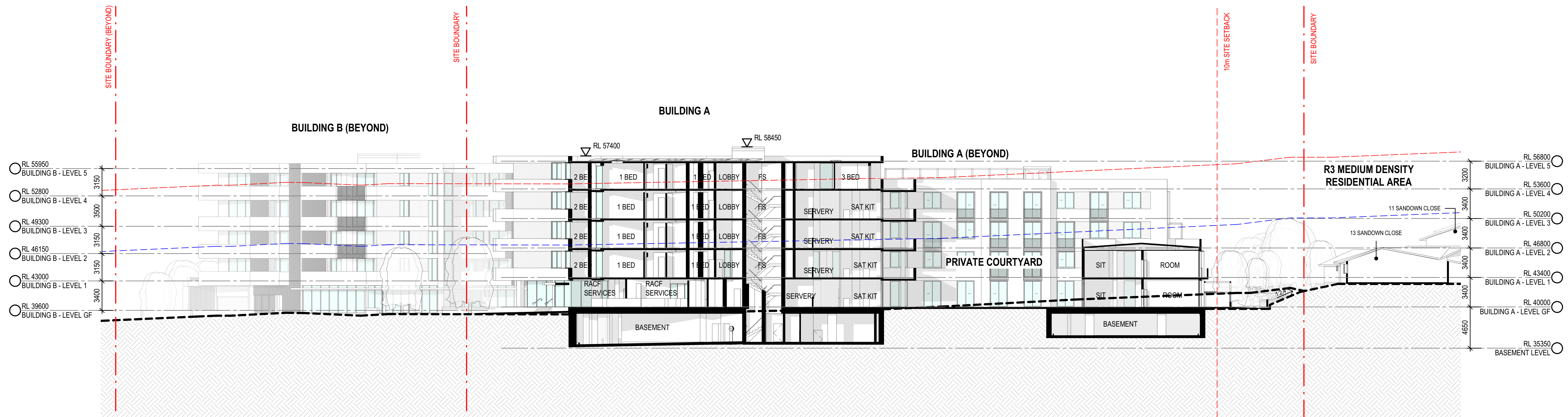
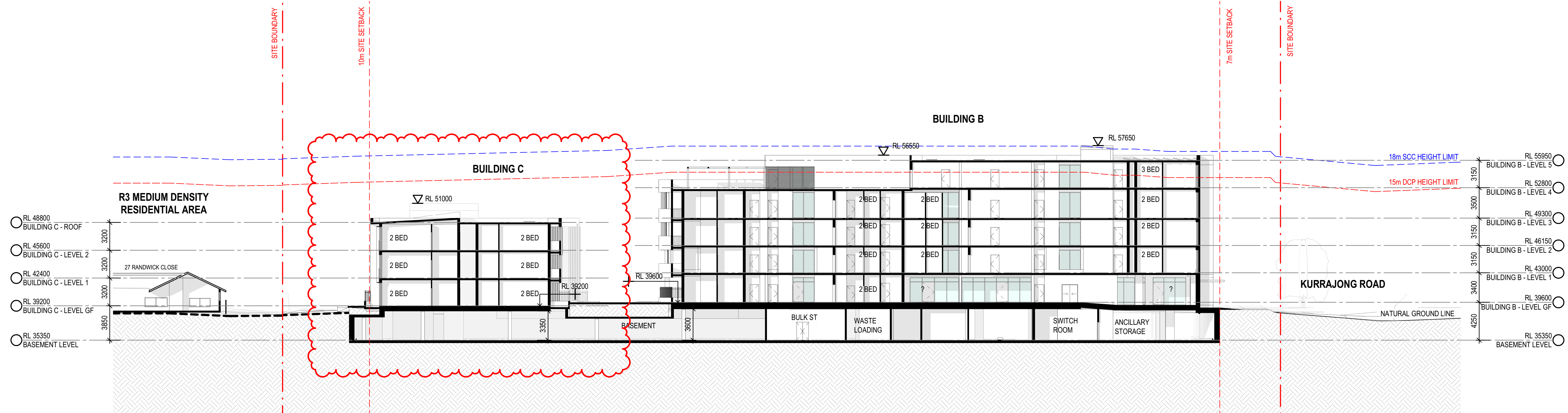
Lot 1, Pier 8-9, 23 Hickson Road  
Walsh Bay New South Wales 2000 Australia  
T 61 2 9290 2722 F 61 2 9290 1150  
E sydney@jacksonteece.com  
Jackson Teece Chesterman Willis Pty Ltd  
Trading as Jackson Teece  
ABN 15 083 807 390  
Nominated Architects: Damian Barker (8192), John Gow (6790), Daniel Hudson (8315)

**JACKSON TEECE**

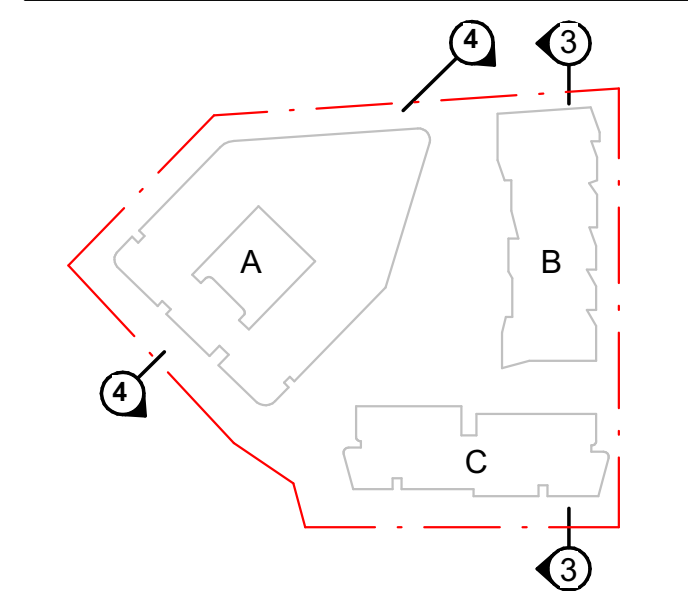


AMENDMENTS

ISSUE	DESCRIPTION	APPROVED	DATE
A	FOR DEVELOPMENT APPLICATION	RP	15/11/19
B	FOR DEVELOPMENT APPLICATION	RP	07/01/21



KEY PLAN



THIS DRAWING ISSUE HAS BEEN REVIEWED FOR

DEVELOPMENT APPLICATION

APPROVED BY: GA CHECKED BY: RP

CLIENT SUMMIT CARE



DRAWING SITE SECTIONS - 02

SHEET CREATED 06/02/16 SCALE @ A1 1 : 250 DRAWN BN

PROJECT No. 2016098 DRAWING No. DA-301 ISSUE B

PROJECT CASULA AGED CARE

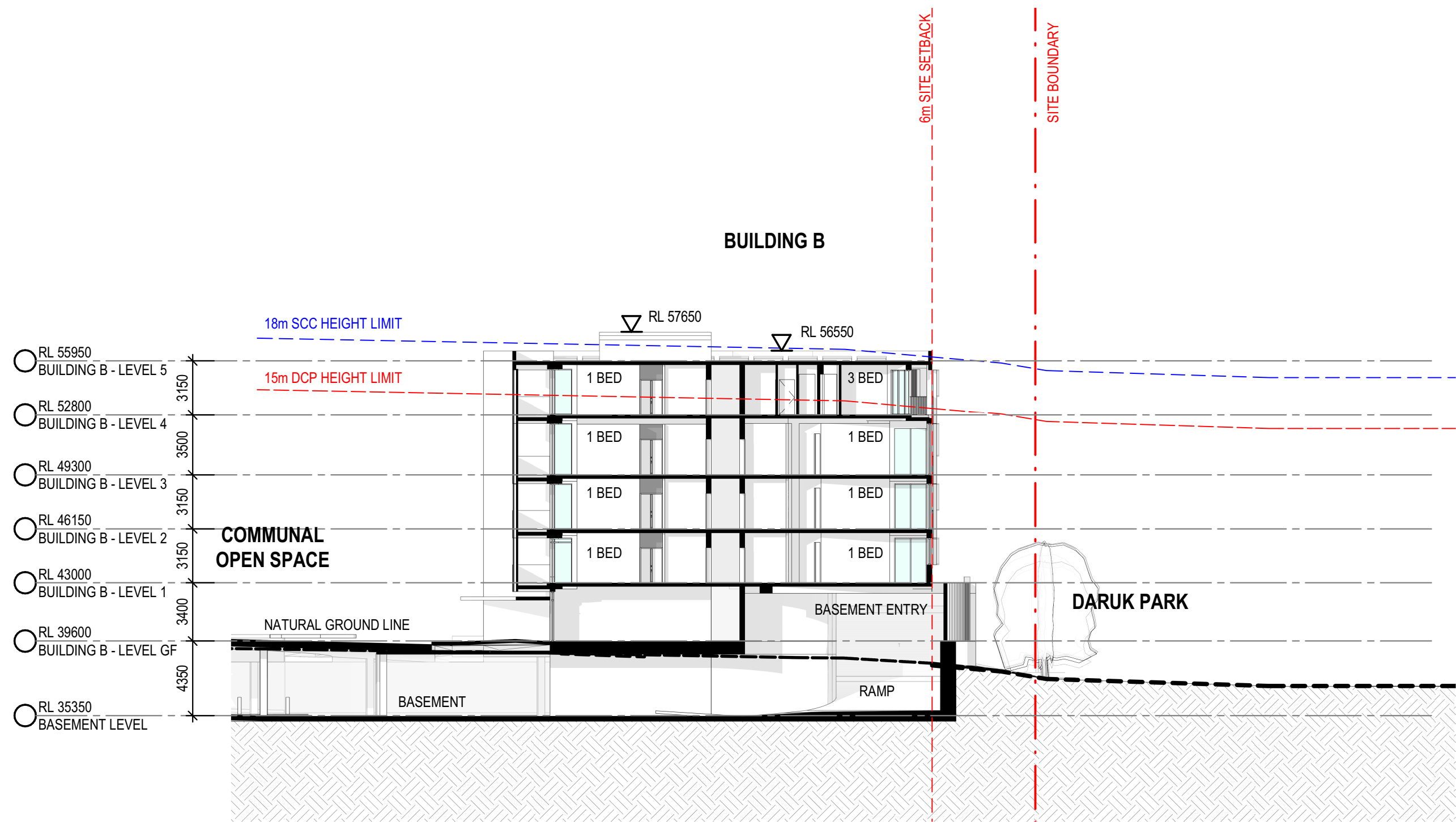
Lot 1, Pier 8-9, 23 Hickson Road  
Walsh Bay New South Wales 2000 Australia  
T 61 2 9290 2722 F 61 2 9290 1150  
E sydney@jacksonteece.com  
Jackson Teece Chesterman Willis Pty Ltd  
Trading as Jackson Teece  
ABN 15 683 807 290  
Nominated Architects: Damian Barker (8192), John Gow (6790), Daniel Hudson (8315)

JACKSON TEECE

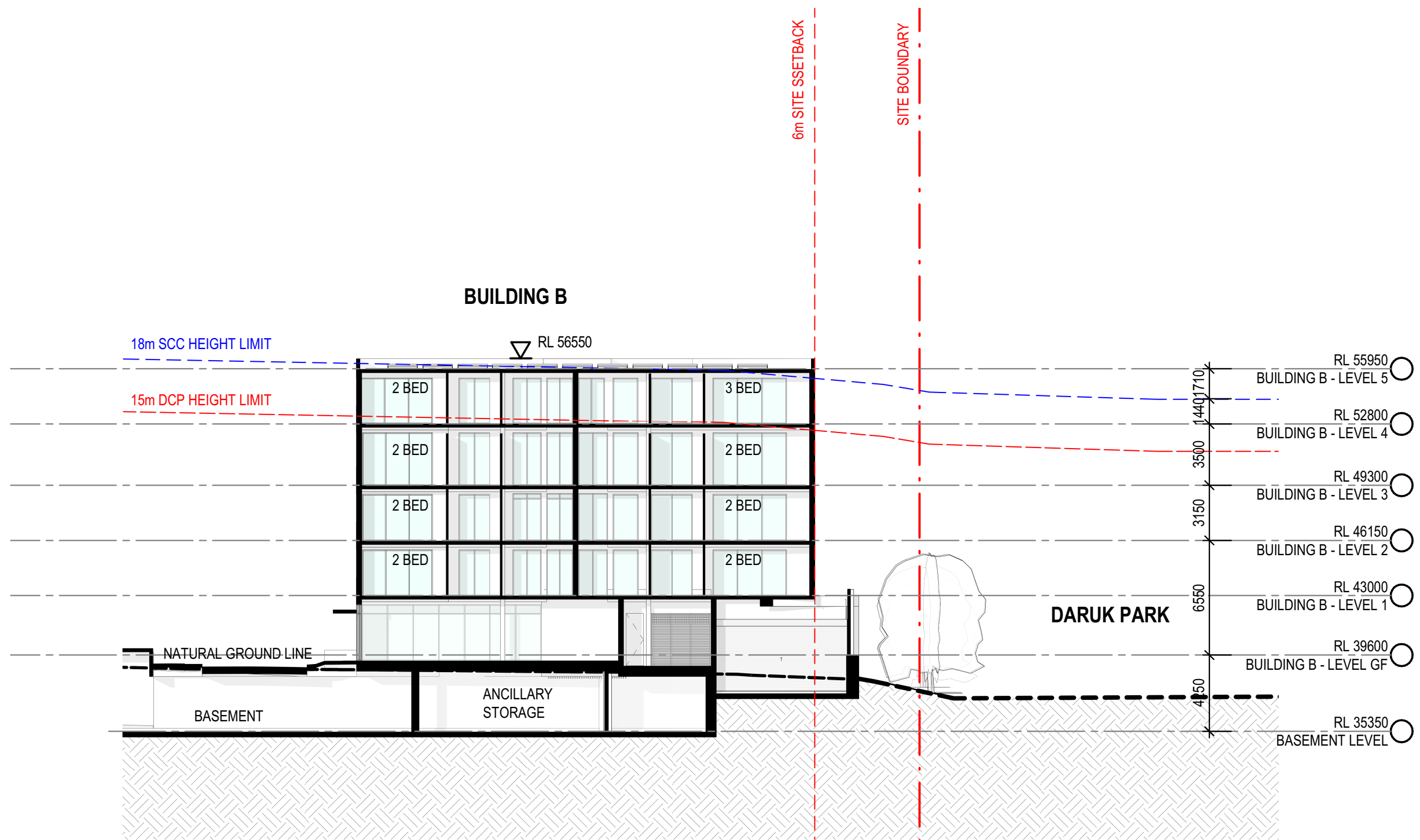


AMENDMENTS

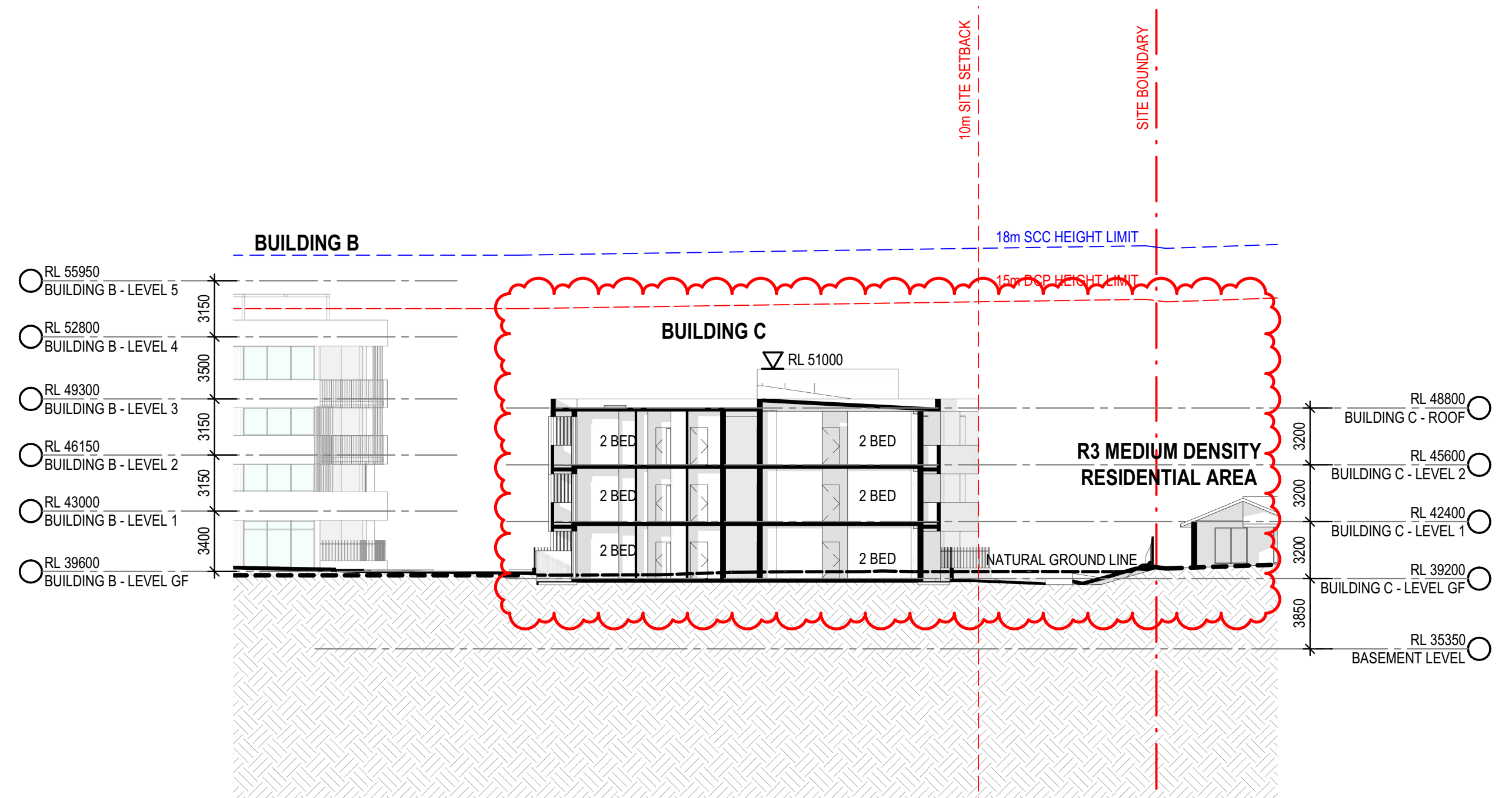
ISSUE	DESCRIPTION	APPROVED	DATE
A	FOR DEVELOPMENT APPLICATION	RP	15/11/19
B	FOR DEVELOPMENT APPLICATION	RP	07/01/21



1 SITE SECTION - 05  
SCALE 1 : 250

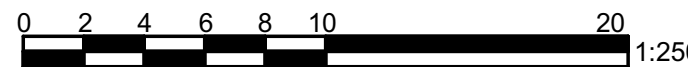
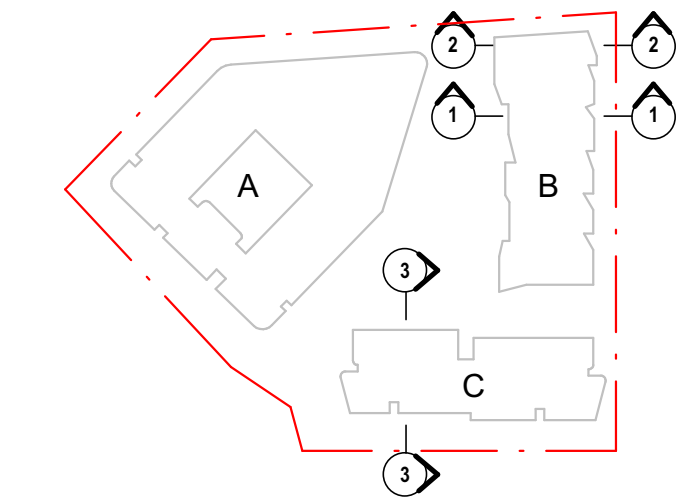


2 SITE SECTION - 06  
SCALE 1 : 250



3 SITE SECTION - 07  
SCALE 1 : 250

KEY PLAN



THIS DRAWING ISSUE HAS BEEN REVIEWED FOR

DEVELOPMENT APPLICATION

APPROVED BY: GA CHECKED BY: RP

CLIENT  
SUMMIT CARE



DRAWING  
SITE SECTIONS - 03

SHEET CREATED 06/07/19 SCALE @ A1 1 : 250 DRAWN RP

PROJECT No. 2016098 A DISCP. DA-302 DRAWING No. ISSUE B

PROJECT  
CASULA AGED CARE

Lot 1, Pier 8-9, 23 Hickson Road  
Walsh Bay New South Wales 2000 Australia  
T 61 2 9290 2722 F 61 2 9290 1150  
E sydney@jacksonteece.com  
Jackson Teece Chesterman Willis Pty Ltd  
Trading as Jackson Teece  
ABN 15 683 807 290  
Nominated Architects: Damian Barker (8192), John Gow (6790), Daniel Hudson (8315)

JACKSON TEECE





CONCEPTS AND INFORMATION CONTAINED IN THIS DRAWING ARE COPYRIGHT AND MAY NOT BE REPRODUCED IN WHOLE OR PART OR BY ANY MEDIA, WITHOUT THE WRITTEN PERMISSION OF JACKSON TEECE. DO NOT SCALE THIS DRAWING. USE FIGURED DIMENSIONS ONLY. VERIFY ALL PROJECT DIMENSIONS BEFORE COMMENCING ON-SITE WORK OR OFF-SITE FABRICATION. NOTIFY JACKSON TEECE OF ANY DISCREPANCIES AND SEEK INSTRUCTIONS.

AMENDMENTS

ISSUE	DESCRIPTION	APPROVED	DATE
A	FOR DEVELOPMENT APPLICATION	RP	15/11/19
B	FOR DEVELOPMENT APPLICATION	RP	07/01/21

THIS DRAWING ISSUE HAS BEEN REVIEWED FOR

DEVELOPMENT APPLICATION

APPROVED BY: GA CHECKED BY: RP

CLIENT SUMMIT CARE



DRAWING PERSPECTIVE - VIEW OF KURRAJONG ROAD ENTRY

SHEET CREATED 06/02/16 SCALE @ A1 NTS DRAWN

PROJECT No. 2016098 DRAWING No. DA-400 ISSUE B

PROJECT CASULA AGED CARE

Lot 1, Pier 8-9, 23 Hickson Road  
Walsh Bay New South Wales 2000 Australia  
T 61 2 9290 2722 F 61 2 9290 1150  
E sydney@jacksonteece.com  
Jackson Teece Chesterman Willis Pty Ltd  
Trading as Jackson Teece  
ABN 15 083 837 590  
Nominated Architects: Damian Barker (8192), John Gow (6790), Daniel Hudson (8315)

JACKSON TEECE





CONCEPTS AND INFORMATION CONTAINED IN THIS DRAWING ARE COPYRIGHT AND MAY NOT BE REPRODUCED IN WHOLE OR PART OR BY ANY MEDIA, WITHOUT THE WRITTEN PERMISSION OF JACKSON TEECE. DO NOT SCALE THIS DRAWING. USE FIGURED DIMENSIONS ONLY. VERIFY ALL PROJECT DIMENSIONS BEFORE COMMENCING ON-SITE WORK OR OFF-SITE FABRICATION. NOTIFY JACKSON TEECE OF ANY DISCREPANCIES AND SEEK INSTRUCTIONS.

AMENDMENTS

ISSUE	DESCRIPTION	APPROVED	DATE
A	FOR DEVELOPMENT APPLICATION	RP	15/11/19
B	FOR DEVELOPMENT APPLICATION	RP	07/01/21

THIS DRAWING ISSUE HAS BEEN REVIEWED FOR

DEVELOPMENT APPLICATION

APPROVED BY: GA CHECKED BY: RP

CLIENT SUMMIT CARE



DRAWING PERSPECTIVE - VIEW OF COMMUNAL COURTYARD

SHEET CREATED 06/02/16 SCALE @ A1 NTS DRAWN

PROJECT No. 2016098 A DISCP. DA-401 ISSUE B

PROJECT CASULA AGED CARE

Lot 1, Pier 8-9, 23 Hickson Road  
Walsh Bay New South Wales 2000 Australia  
T 61 2 9290 2722 F 61 2 9290 1150  
E sydney@jacksonteece.com  
Jackson Teece Chesterman Willis Pty Ltd  
Trading as Jackson Teece  
ABN 15 083 807 290  
Nominated Architects: Damian Barker (8192), John Gow (6790), Daniel Hudson (8315)

JACKSON TEECE





CONCEPTS AND INFORMATION CONTAINED IN THIS DRAWING ARE COPYRIGHT AND MAY NOT BE REPRODUCED IN WHOLE OR PART OR BY ANY MEDIA, WITHOUT THE WRITTEN PERMISSION OF JACKSON TEECE. DO NOT SCALE THIS DRAWING. USE FIGURED DIMENSIONS ONLY. VERIFY ALL PROJECT DIMENSIONS BEFORE COMMENCING ON-SITE WORK OR OFF-SITE FABRICATION. NOTIFY JACKSON TEECE OF ANY DISCREPANCIES AND SEEK INSTRUCTIONS.

AMENDMENTS

ISSUE	DESCRIPTION	APPROVED	DATE
A	FOR DEVELOPMENT APPLICATION	RP	15/11/19
B	FOR DEVELOPMENT APPLICATION	RP	07/01/21

THIS DRAWING ISSUE HAS BEEN REVIEWED FOR

DEVELOPMENT APPLICATION

APPROVED BY: GA CHECKED BY: RP

CLIENT  
SUMMIT CARE



DRAWING  
PERSPECTIVE - AERIAL VIEW

SHEET CREATED 05/08/19 SCALE @ A1 NTS DRAWN

PROJECT No. DISCP. DRAWING No. ISSUE  
2016098 A DA-402 B

PROJECT  
CASULA AGED CARE

Lot 1, Pier 8-9, 23 Hickson Road  
Walsh Bay New South Wales 2000 Australia  
T 61 2 9290 2722 F 61 2 9290 1150  
E sydney@jacksonteece.com  
Jackson Teece Chesterman Willis Pty Ltd  
Trading as Jackson Teece  
ABN 15 083 837 290  
Nominated Architects: Damian Barker (8192), John Gow (6790), Daniel Hudson (8315)

JACKSON TEECE





CONCEPTS AND INFORMATION CONTAINED IN THIS DRAWING ARE COPYRIGHT AND MAY NOT BE REPRODUCED IN WHOLE OR PART OR BY ANY MEDIA, WITHOUT THE WRITTEN PERMISSION OF JACKSON TEECE. DO NOT SCALE THIS DRAWING. USE FIGURED DIMENSIONS ONLY. VERIFY ALL PROJECT DIMENSIONS BEFORE COMMENCING ON-SITE WORK OR OFF-SITE FABRICATION. NOTIFY JACKSON TEECE OF ANY DISCREPANCIES AND SEEK INSTRUCTIONS.

AMENDMENTS

ISSUE	DESCRIPTION	APPROVED	DATE
A	FOR DEVELOPMENT APPLICATION	RP	15/11/19
B	FOR DEVELOPMENT APPLICATION	RP	07/01/21

THIS DRAWING ISSUE HAS BEEN REVIEWED FOR

DEVELOPMENT APPLICATION

APPROVED BY: GA CHECKED BY: RP

CLIENT  
SUMMIT CARE



DRAWING  
PERSPECTIVE - VIEW OF  
COMMUNAL COURTYARD -  
ALTERNATIVE ANGLE

SHEET CREATED 11/15/19 SCALE @ A1 DRAWN AT

PROJECT No. DISCP. DRAWING No. ISSUE  
2016098 A DA-403 B

PROJECT  
CASULA AGED CARE

Lot 1, Pier 8-9, 23 Hickson Road  
Walsh Bay New South Wales 2000 Australia  
T 61 2 9290 2722 F 61 2 9290 1150  
E sydney@jacksonteece.com  
Jackson Teece Chesterman Willis Pty Ltd  
Trading as Jackson Teece  
ABN 15 083 837 290  
Nominated Architects: Damian Barker (8392), John Gow (6790), Daniel Hudson (8315)

JACKSON TEECE